



COMPASS

Queens Luxury Report

Dec 29 - Jan 04, 2025, Residential Contracts \$1.25M+

Photo: 21-10 44th Drive, Unit PHA

The Queens luxury real estate market, defined as all properties priced \$1.25M and above, saw 7 contracts signed this week, made up of 1 condo, and 6 houses. The previous week saw 16 deals. For more information or data, please reach out to a Compass agent.

\$1,777,143

Average Asking Price

\$1,738,000

Median Asking Price

\$927

Average PPSF

0%

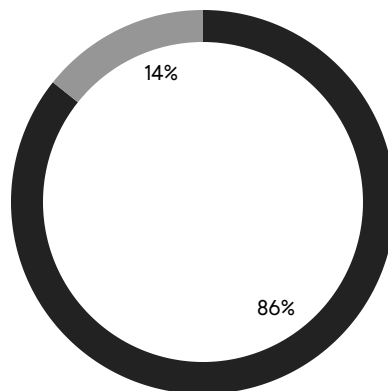
Average Discount

\$12,440,000

Total Volume

116

Average Days On Market



■ NORTHEASTERN QUEENS
■ NORTHWESTERN QUEENS

1

Condo Deal(s)

0

Co-op Deal(s)

6

Single-Family Deal(s)

\$1,980,000

Average Asking Price

\$0

Average Asking Price

\$1,743,334

Average Asking Price

\$1,980,000

Median Asking Price

\$0

Median Asking Price

\$1,683,000

Median Asking Price

\$1,430

Average PPSF

\$843

Average PPSF

1,385

Average SqFt

2,178

Average SqFt



147-07 8th Avenue

Whitestone

Contract Signed

Type	House	Price	\$2,398,000	Sq. Ft.	2,481	Beds	4
DOM	145	Initial	\$2,398,000	PPSF	\$967	Baths	3

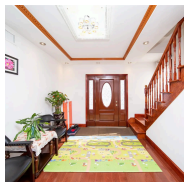


27-28 Thomson Avenue, Unit 304

Long Island City

Contract Signed

Type	Condo	Price	\$1,980,000	Sq. Ft.	1,385	Beds	1
DOM	69	Initial	\$1,980,000	PPSF	\$1,430	Baths	2



56-18 187th Street

Auburndale

Contract Signed

Type	House	Price	\$1,948,000	Sq. Ft.	1,989	Beds	7
DOM	225	Initial	\$1,948,000	PPSF	\$980	Baths	6

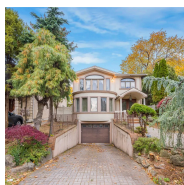


71-26 170th Street

Hillcrest

Contract Signed

Type	House	Price	\$1,738,000	Sq. Ft.	2,632	Beds	5
DOM	174	Initial	\$1,738,000	PPSF	\$661	Baths	4



201-05 28th Ave

Auburndale

Contract Signed

Type	House	Price	\$1,628,000	Sq. Ft.	3,058	Beds	4
DOM	54	Initial	\$1,628,000	PPSF	\$533	Baths	3



157-43 27th Avenue

Flushing

Contract Signed

Type	House	Price	\$1,398,000	Sq. Ft.	1,628	Beds	3
DOM	51	Initial	\$1,400,000	PPSF	\$859	Baths	3

Compass is a licensed real estate broker and abides by Equal Housing Opportunity laws. All material presented herein is intended for informational purposes only. Information is compiled from sources deemed reliable but is subject to errors, omissions, changes in price, condition, sale, or withdrawal without notice. No statement is made as to the accuracy of any description. All measurements and square footages are approximate. This is not intended to solicit property already listed. Nothing herein shall be construed as legal, accounting or other professional advice outside the realm of real estate brokerage.



58-15 134th Street
Queensboro Hill

Contract Signed

Type	House	Price	\$1,350,000	Sq. Ft.	1,276	Beds	3
DOM	92	Initial	\$1,350,000	PPSF	\$1,058	Baths	2

Compass is a licensed real estate broker and abides by Equal Housing Opportunity laws. All material presented herein is intended for informational purposes only. Information is compiled from sources deemed reliable but is subject to errors, omissions, changes in price, condition, sale, or withdrawal without notice. No statement is made as to the accuracy of any description. All measurements and square footages are approximate. This is not intended to solicit property already listed. Nothing herein shall be construed as legal, accounting or other professional advice outside the realm of real estate brokerage.